



ARKA JAIN University, Jharkhand

2nd Semester Final Examination – 2018-19

Subject: Fashion Illustration I

Time: 3 Hours

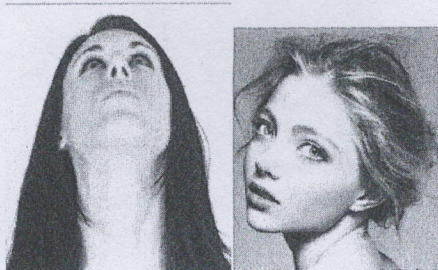
Course: BA (Hons.) FD

Full Marks: 50

Pass Marks: 20

-
- All questions are compulsory
 - Evaluation will be done on the basis of creativity, understanding of proportions, neatness and visual representation skills.
-

Q.1) Recreate the below into basic stick figure faces. Mark the eye level, nose level as well as the mouth level. Achieve the right head/ face angles. Ignore the hair style. **(10 marks)**



Q2.) Illustrate a face measuring at least 7 inches. Eyes, Nose, ears, lips should be illustrated well along with hair style. The angle of the face / head can be of your choice.

Q.3) a.) Create a nine head croqui in a posture of your choice. Apply your understanding of the body angles. (Pencil sketch) **(15 marks)**

b.) Sketch the same croqui again with an evening wear garment. (Use colors to illustrate it well)
(15 marks)



ARKA JAIN University, Jharkhand

2nd Semester External Examination - 2019-20

Subject : Pattern Making

Course: BA FD

Time : 3 Hours

Full Marks : 50

Pass Marks: 20

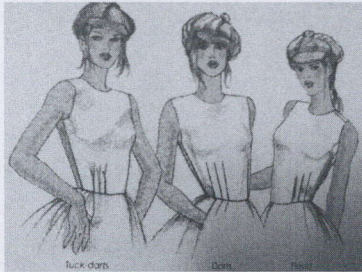
- Question Paper is divided into **Three Parts –A, B & C**
- **Part-A, Part- B** and **Part - C** contain **optional** questions
- All patterns to be properly labelled.

PART A

Q.1) Create a pattern for any 1 of the following

(5x1=5)

a) Dart Clusters - At waist



b) Gathers at the shoulder

PART B

Answer any One: By using any of the dart manipulation technique - slash and spread or pivotal transfer, create the patterns for the illustrated designs below. You will have 2 patterns for the design - 1 working pattern and 1 final pattern with seam allowance and dart trueing. (10)

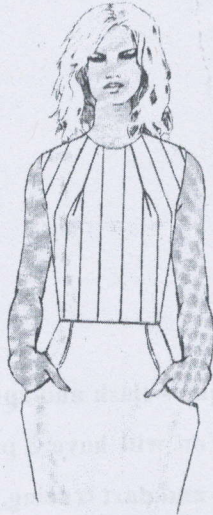
Q.2) Side Dart



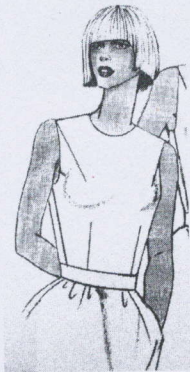
Q.3) Mid-armhole Dart



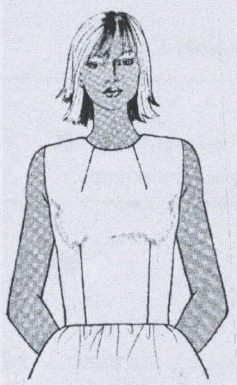
Q.4) Mid-Neck Dart



Q. 5) Do any 1 of the below double dart manipulation (10)
a. Shoulder tip and Waist Dart



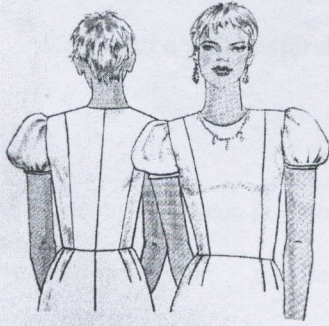
b. Mid-neck and Waist Dart



PART C

Q.5) Create any 1 of the 2 below stylelines. (15)

Classic Princess Styleline



Armhole Princess



Q. 6) Create the patterns for any 1 of the following (10)

Accordion Pocket
Patch Pockets



ARKA JAIN University, Jharkhand

2nd Semester Final Examination – 2018-19

Subject: Garment construction I
Course: BA (Hons.) FD

Time: 3 Hours

Full Marks: 50
Pass Marks: 20

-
- Question paper contains 3 Parts. Part B has a choice.
 - Evaluation will be done on the basis of accuracy, neatness and technical understanding.
-

Part A

Q.1) Construct a French seam swatch (5 Marks)

Part B

Q2.) Construct a Single Lip pocket (15 Marks)

Or

Construct a square spiral swatch (10 cm by 10cm)

Part C

Q3.) Construct a basic bodice front open with placket and hook and eye as closures. The neck, arm hole and hem finishes can be of your choice (30 marks)



ARKA JAIN University, Jharkhand

2nd Semester Final Examination - 2018-19

Subject : Business Communication

Time : 3 Hours

Course: ~~DBA~~/BA (Hons.)

Full Marks : 70

Pass Marks: 28

- Candidates are required to give their answers in their own words as far as practicable.
- Question Paper is divided into **Three Parts –A, B & C**
- **Part-A** is compulsory.
- **Part- B** contains **SIX** questions out of which **FOUR** questions are to be answered.
- **Part- C** contains **SIX** questions out of which **THREE** questions are to be answered.

PART A

Q.1) All questions are compulsory.

A] Multiple Choice Questions :

(10x1=10)

- a) Which of the following can hamper the process of communication?
- Channel
 - Encoder
 - Noise
 - Pollution
- b) An example of communication channel is:
- Face to face conversation
 - feedback
 - context
 - noise
- c) To decode a message is to
- Translate ideas into code
 - Informal
 - Vertical
- d) Example of oral communication is.....
- Telephone
 - Letter
 - E-mail
 - Fax
- e) Written communication includes:-
- Film
 - Reports and forms
 - Interviews
 - Speaking
- f) The following is (are) non-verbal communication.
- Facial expression
 - Appearance
 - Posture
 - All of the above.

g) The following is the most effective way of communication:

- i) Verbal
- ii) Non -Verbal
- iii) Written
- iv) All of the above

h) Communication is the task of imparting-

- i) Training
- ii) Information
- iii) Knowledge
- iv) Message

i) Upward communication flows from..... to

- i) Upper to lower
- ii) Lower to upper
- iii) Horizontal
- iv) Diagonal

j) Appeals are used incommunication.

- i) Horizontal
- ii) Upward
- iii) Downward
- iv) Grapevine

B] Very Short question

(5x2=10)

- a) "Communication is the two way process". Explain
- b) What are the different purpose of communication?
- c) Discuss the different psychological barriers to communication.
- d) What is the difference between upward and downward communication?
- e) What is Creative writing?

PART B

Q.2) Answer any four:

(4x5=20)

- i) What is communication? Discuss its importance in management.
- ii) Discuss the different language barriers to communication.
- iii) Short notes on any one:-
 - a) Vertical and Horizontal communication
 - b) Communication network
 - c) Grapevine communication
 - d) Formal communication
 - e) Informal communication.
- iv) What is the difference between Downward and Upward communication?
- v) Discuss the drawbacks of Upward communication.
- vi) Discuss the nature of Creative writing.

PART C

Answer any three:

(3x10=30)

- Q.3) What do you mean by communication? Discuss the various steps of Communication process.
- Q.4) Discuss the different barriers to Business communication. what are the different ways to overcome barriers?
- Q.5) What do you mean by Written communication? Discuss the advantages and disadvantages of written communication.
- Q.6) What do you mean by Informal communication Discuss its advantages and disadvantages.
- Q.7) Creative Writing is a way to express one's own thought and expression in writing. Discuss
- Q.8) List the essential guidelines or rules to be kept in mind while Public speaking.



Subject: IT- SKILLS

Time: 2 Hours

Course: BA- ALL

Full Marks: 35

Pass Marks: 10

- Candidates are required to give their answers in their own words as far as practicable.
- Question Paper is divided into **Three Parts –A, B & C**
- **Part-A** is compulsory.
- **Part- B** contains **SIX** questions out of which **FOUR** questions are to be answered.
- **Part- C** contains **Two** questions out of which **ONE** questions are to be answered.

PART A

Q.1) All questions are compulsory

A) Multiple Choice Questions :

(5x1=5)

1. It is possible to _____ a data source before performing a merge.
 - a) Create
 - b) Modify
 - c) Sort
 - d) All of the Above
2. The numeric data entered in the worksheet is _____ aligned by default.
 - a) Left
 - b) Right
 - c) Center
 - d) Top
3. Merge cells option can be applied from
 - a) Format cells dialog box Alignment Tab
 - b) Formatting Toolbar
 - c) Both of above
 - d) None of above
4. Which of the following is graphic solution for Word Processors?
 - a) Clipart
 - b) Word Art
 - c) Drop Cap
 - d) All of Above
5. You can open the Sort dialog box by choosing Sort from the _____ menu
 - a) View
 - b) Format
 - c) Tools
 - d) Data

PART B

Q2. Very Short question

(5x4=20)

1. What are different types of fonts in MS word?
2. What is find and replace?
3. How to insert formula in cells. Give an example.
4. What are margins, what are the different types of margins formats?
5. What is the importance of studying computer application?
6. Write notes on Bullets, numbering, Clip Art, Borders, and shading in Ms Word 2007.

PART C

Answer any one:

(1x10=10)

Q3). Create 4 Slides on annual day of your college and perform the following:

- a) Give Header and Footer
- b) Give Background Color
- c) Insert Picture from Clip Art
- d) Insert Slide Numbers
- e) Insert table and charts

Q4). Write formulas for the operations (a) – (e) based on the spreadsheet given below along with the relevant cell address: write your Answer step-by-step.

| | A | B | C | D | E | F | G |
|---|-------|--------|---------|-------|-----------|-------|---------|
| 1 | SNO | Name | Science | Maths | Computers | Total | Average |
| 2 | 1 | Swati | 70 | 80 | 87 | -- | -- |
| 3 | 2 | Shruti | 90 | 98 | 89 | -- | -- |
| 4 | 3 | Neelu | 90 | 90 | 98 | -- | -- |
| 5 | 4 | Rosy | 60 | 76 | 79 | -- | -- |
| 6 | 5 | Shreya | 50 | 45 | 67 | -- | -- |
| 7 | Max | | | | -- | | |
| 8 | Total | | -- | | | | |

- (a) To calculate the Total Marks as sum of Science, Maths & Computers for each student and display them in column F.
- (b) To calculate the average marks for each student and display them in column G.
- (c) To calculate the highest marks in Computers and display it in cell E7.
- (d) To calculate the total number of students appearing for the Science test and display it in cell C8.
- (e) To create a Chart from the above table.



Subject : Entrepreneurship & Small Business

Time : 3 Hours

Course: BA(Eco/Eng)

Full Marks : 70

Pass Marks: 28

- Candidates are required to give their answers in their own words as far as practicable.
- Question Paper is divided into **Three Parts –A, B & C**
- **Part-A** is compulsory.
- **Part- B** contains **SIX** questions out of which **FOUR** questions are to be answered.
- **Part- C** contains **SIX** questions out of which **THREE** questions are to be answered.

PART A

Q.1) All questions are compulsory

A) Multiple Choice Questions :

(10x1=10)

- In MSME, the first “M” stands for :
 - Medium
 - Multiple
 - Minor
 - Micro
- The category of Entrepreneurs who create an entirely new products/services are:
 - Innovating Entrepreneur
 - Imitative Entrepreneurs
 - Drone Entrepreneurs
 - Fabian Entrepreneurs
- NIESBUD is located in
 - Kolkata
 - Ahmedabad
 - Hyderabad
 - NOIDA
- The apex institution which develops the curriculum for Entrepreneurship Development is:
 - NSIC
 - SIDO
 - DIC
 - NIESBUD
- In DIC, “I” stands for :
 - Information
 - Industries
 - Informatics
 - Intelligence
- The category of Entrepreneurs who adopt changes with caution in their enterprise are:
 - Innovating Entrepreneurs
 - Imitative Entrepreneurs
 - Drone Entrepreneurs
 - Fabian Entrepreneurs
- Which of the following exclusively provides Entrepreneurship Development Programme:
 - NSIC
 - EDII
 - BIFR
 - DIC
- The “B” in the BIFR stands for
 - BANK
 - BUREAU
 - BOARD
 - BUSINESS
- Which among the following provides provisional registration under small scale industries:
 - NSIC
 - SIDO
 - DIC
 - NIESBUD
- Following institution helps in “Govt. purchase programme” to small scale enterprise:
 - NSIC
 - DIC
 - NIESBUD
 - EDII

B] Very Short question

(5x2=10)

- a). Mention any two difference between an Entrepreneur and a Manager.
- b). Describe a Drone Entrepreneur.
- c). What do you understand by a Project Report.
- d). Mention any two factors that affect the Working Capital Requirement of an Enterprise.
- e). Mention any two sources of a new business idea.

PART B

Q.2) Answer any four:

(4x5=20)

- i) Write short notes on the challenges faced by an Entrepreneur.
- ii) Write short notes on DIC.
- iii) Mention the benefits of Industrial Estates.
- iv) Mention any five qualities of a successful entrepreneur.
- v) Write short notes on NIESBUD.
- vi) Briefly mention the steps involved in setting up an enterprise.

PART C

Answer any three:

(3x10=30)

- Q.3)** Discuss the role of BFIR in revival of a Sick Industry.
- Q.4)** Define the term Entrepreneurship. Discuss the various functions of an Entrepreneur
- Q.5)** Discuss the role of Entrepreneur in the development of a nation.
- Q.6)** What do you mean by working Capital? Describe the factors affecting the working capital.
- Q.7)** Discuss the various forms of ownership pattern for an enterprise?
- Q.8)** What are the problems faced by small scale industries ? Discuss the remedial measures.