



# ARKA JAIN University, Jharkhand

3rd Semester Final Examination – 2018-19

1-C-X

Subject: Draping

Time: 3 Hours

Course: BA FD

Full Marks: 50

Pass Marks: 20

- Candidates are required to be original in their ideas.
- Question paper contains two parts to it. Part A is compulsory and Part B has choices.
- There are marks for execution, accuracy design aesthetics.

## PART A

Q.1) Measure the following (10 marks)

- a.) Back Neck
- b.) Across Chest (Back)
- c.) Side Length
- d.) Waist Arc
- e.) Shoulder length
- f.) Centre front length
- g.) Shoulder Slope
- h.) Side hip Depth
- i.) Bust Span
- j.) Across shoulder

## PART B

Q.2) Create a drape of a top of your choice. (40 marks)

Or

Q.3) Create a drape of a skirt of your choice





## ARKA JAIN University, Jharkhand

3rd Semester Final Examination – 2018-19

Subject: Fashion Illustration

Course: BA FD

Time: 3Hours

Full Marks: 50

Pass Marks: 20

- Candidates are required to be original in their ideas.
- Question Paper contains two questions both of which are compulsory.
- There are marks for originality, creativity, execution , presentation and neatness

### PART A

Q.1) Create a fashion croqui in a 3/4<sup>th</sup> profile in an interesting pose (not a straight standing posture). Ensure that it is with no garments and attention is paid to the body angles. Ensure that that you draw your reference base lines to establish the correct proportions. (20 marks)

Q2.) Create a fashion illustration for a bridal wear. The choices of colors, details on fabric, the style of garment are the important aspects to be paid attention to. Be creative and innovative. (30 marks)





Subject : Pattern Making II

Course: BA FD

Full Marks : 50

Pass Marks: 20

Time : 3 Hours

- Candidates are required to give their answers in their own words as far as practicable.
- Question Paper is divided into **Two Parts –A & B**
- **Part-A** is compulsory.
- **Part- B** contains **TWO** optional questions.
- Patterns should be properly labelled

PART A

Q. 1) Answer the below questions

(3+3+9=15)

i) Write the correct name for the skirt lengths as seen in the below image

(1x3 = 3)

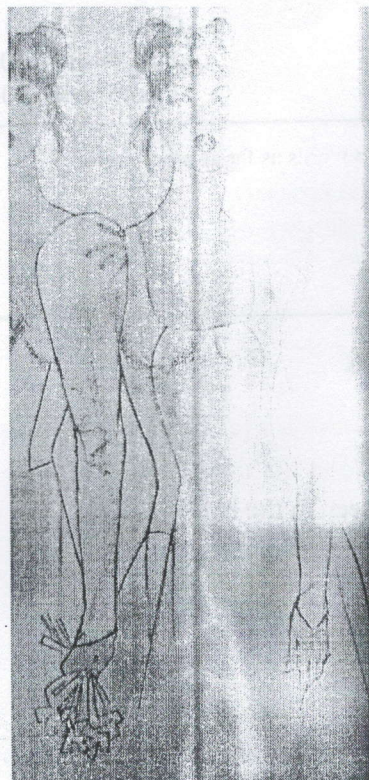
- a) mini
- b) knee length
- c) Ballerina



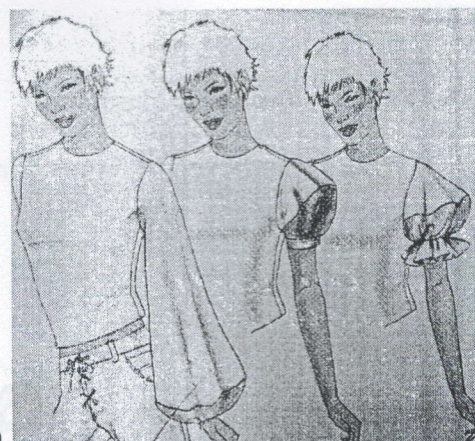


ii) Identify the types of sleeves

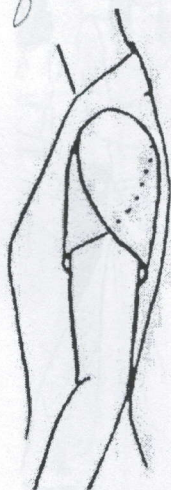
(1x3 = 3)



a) Leg of mutton



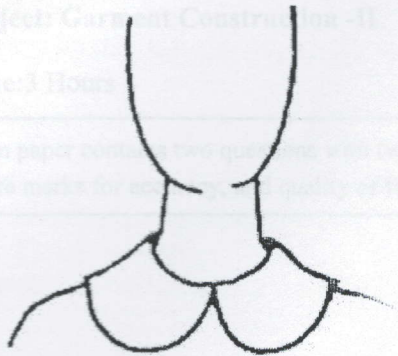
b) Lantana



c) Petal

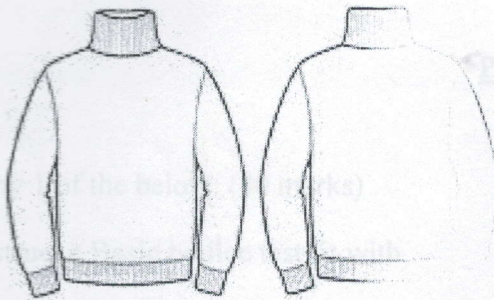


iii) Identify the collars as illustrated below. Draft any one of the collars. (2+7 = 9)



*Peter pan*

Q.1) a. Construct patch pocket. (10marks)



*Roll collar*

b.

-Continuous Peter Pan collar

**PART B**

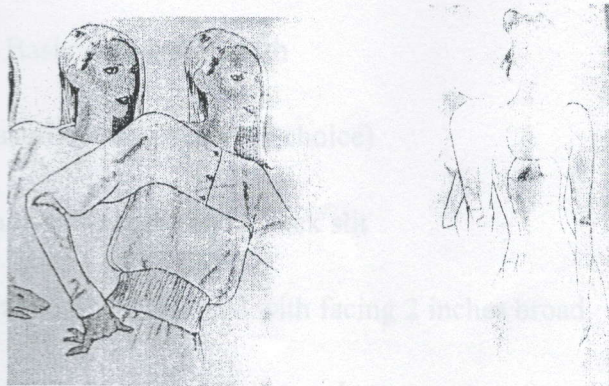
-Set in sleeves on one side and no sleeves on the other side. The armhole to be finished with piping.

Q.2) Answer the below questions (20+15 = 35)

i) Create pattern and PM test fit (pinned to the dress form) for the below mentioned skirt. Create a waist band for the skirt that you will select (any 1 skirt) (15 + 5 = 20)

- a. All round pleated skirt (2 pleats) fitted at the Hip
- b. High Waist Skirt

ii) Create patterns for the below illustrated sleeve (any 1 sleeve) (15)



a.

Q.3) Construct a

Waist band neck

It should have

Hem of the skirt

Opening shall





# ARKA JAIN University, Jharkhand

3rd Semester Final Examination – 2018-19

Subject: Garment Construction -II

Course: BA FD

Time:3 Hours

Full Marks:50

Pass Marks: 20

- Question paper contains two questions with two parts to it. Part A is compulsory. Part B has choices.
- There are marks for accuracy, and quality of finishes.

## PART A

Q.1) Construct a patch pocket. (10marks)

## PART B

Answer any 1 of the below: (40 marks)

Q.2) Construct a Basic bodice test fit with

- Continuous Peter Pan collar
- Set in sleeves on one side and no sleeves on the other side. The armhole to be finished with piping.
- It should be front open and double placket with fold and machine stitched.
- Either put hook and eye or buttons on the front placket.
- Hem to be finished with finish of your choice.

OR

Q.3) Construct a Basic skirt test fit with

- Waist band measuring (width of your choice)
- It should have a back opening and a back slit
- Hem of the skirt should be finished with facing 2 inches broad.
- Opening should have either hook & eye or buttons.





# ARKA JAIN University, Jharkhand

3rd Semester Final Examination - 2018-19

Subject : Computer software Training - Photoshop

Course: BA FD

Full Marks : 50

Pass Marks: 20

Time : 3 Hours

- Candidates are required to give their answers in their own words as far as practicable.
- Question Paper is divided into **Two Parts –A & B**
- **Part-A** is compulsory.
- **Part- B** contains **THREE** questions out of which 2 are to be answered.

## PART A

**Q. 1) Multiple choice questions** (10x1 = 10)

i) Photoshop file is saved with the extension

- a) .psp
- b) .psd
- c) .php
- d) psp

ii) Keyboard shortcut for zooming in is

- a) CTRL +
- b) CTRL + Z
- c) ALT -
- d) ALT + S

iii) What does CMYK stand for?

- a) Cyan, Magenta, Yellow, Keppel
- b) Cream, Orange, Yellow, Black
- c) Cyan, Magenta, Yellow, Black
- d) Codec, Orange, Purple, Black

iv) Marquee tool is a type of

- a) crop tool
- b) selection tool
- c) type tool
- d) coloring tool

v) What is the keyboard shortcut for hand tool?

- a) SHIFT + H
- b) H
- c) ALT + H
- d) CTRL + H

vi) Which format of image supports a transparent background

- a) PNG
- b) JPEG
- c) JPG



- d) PSP
- vi) What is the unit of resolution
- Pixels per inch
  - Points per centimeter
  - Pexels per inch
  - Pexels per centimeter
- vii) Which tool can be used to change the color of any object in photoshop
- Color mixer
  - Eyedropper tool
  - Color replacement tool
  - Brush tool
- viii) This tool allows you to apply color, in various sizes/patterns
- Paint Brush Tool
  - Magic Wand Tool
  - Clone Stamp Tool
  - Smudge Tool
- ix) This tool can copy and recreate a portion of an image
- Zoom tool
  - Clone stamp tool
  - Gradient tool
  - Magic wand tool
- x) This menu option allows you to control which options you view in the work space
- Layer
  - Filter
  - Edit
  - Window

### PART B

**Q.2) Attempt any two from the below mentioned set of questions. Save the final solution only in jpeg format on the desktop in a folder with your name, roll number and department. Write the steps of working in the answer sheet provided to you. (2 x 20 = 40)**

i) Create an **advertisement** for a female beauty product. The collage size should be **A4 landscape**. The advertisement should be a collage of at least **5 objects**. The following elements are mandatory - **name of the product, tagline, appropriate logo, about the product**. Use appropriate fonts. Create a border using **pen tool**.

Blur the background and Convert this entire collage to black n white. Save the before and after image with appropriate names.





ii) Create a **magazine cover** for VOGUE. Create the title VOGUE with the creative use of **type masking tool**. Using **color replacement tool**, change the background of the image to **Blue** (color). Using **2 different fonts**, write the main contents of the magazine on the cover page. Create a border using **pen tool** for the cover page.

Convert the magazine cover to black n white. Save before and after image with appropriate names.

iii) Using **pattern stamp tool and color replacement tool** complete the below. Use your creativity as a fashion designer.

- a. add elements to the white room - wallpaper, lampshade, bed, bedsheets, drawers.
- b. add patterns to white outfit - shirt, pants, overcoat, bag

A) Multiple Choice Questions

- 1) Non-renewable resources are - (10x1=10)
  - i) Coal
  - ii) Petroleum
  - iii) Natural gas
  - iv) None of the above
- 2) Atmosphere that protect from harmful UV radiation is
  - i) Troposphere
  - ii) Stratosphere
  - iii) Mesosphere
  - iv) Ionosphere
- 3) Botanical Survey of India is at
  - i) New Delhi
  - ii) Kolkata
  - iii) Mumbai
  - iv) Chennai
- 4) Who among the following is commonly called 'Bird Man of India'?
  - i) Salim Ali
  - ii) M. S. Swaminathan
  - iii) M. C. Mehta
  - iv) Raphael Emerson
- 5) World wildlife week is observed during
  - i) First week of October
  - ii) Second week of October
  - iii) Third week of October
  - iv) Last week of October
- 6) Soil erosion can be prevented by
  - i) Deforestation
  - ii) Afforestation
  - iii) Removal of vegetation
  - iv) Overgrazing
- 7) Mangroves grow in high rain fall areas are
  - i) Ever green forests
  - ii) Semi-deciduous forests
  - iii) Deciduous forests
  - iv) None of the above





# ARKA JAIN University, Jharkhand

3rd Semester Final Examination – 2018-19

7-C-X

Subject: Environmental Science

Time: 3 Hours

Course: BA-FD/ JMC

Full Marks: 70

Pass Marks: 28

- Candidates are required to give their answers in their own words as far as practicable.
- Question Paper is divided into **Three Parts –A,B& C**
- **Part-A** is compulsory.
- **Part- B** contains **SIX** questions out of which **FOUR** questions are to be answered.
- **Part- C** contains **SIX** questions out of which **THREE** questions are to be answered.

## PART A

Q1). All questions are compulsory

A] Multiple Choice Questions:

(10x1=10)

- Non-renewable resources are –
  - exhaustible
  - inexhaustible
  - recyclable
  - None of the above
- Atmospheric layer protect from harmful UV radiation is
  - Troposphere
  - Stratosphere
  - Mesosphere
  - Ionosphere
- Botanical Survey of India is at
  - New Delhi
  - Kolkata
  - Mumbai
  - Chennai
- Who among the following is commonly called 'Bird Man of India'?
  - Salim Ali
  - M. S. Swaminathan
  - M. C. Mehta
  - Raphel Emerson
- World wildlife week is observed during
  - First week of October
  - Second week of October
  - Third week of October
  - Last week of October
- Soil erosion can be prevented by
  - Deforestation
  - A forestation
  - Removal of vegetation
  - Overgrazing
- Forests grow in high rain fall areas are
  - ever green forests
  - temperate forests
  - conifers
  - Tundra Three times



- h) The first protected area in India is
- Silent valley
  - Corbett National Park
  - Bandipur sanctuary
  - Nagar-Hole
- i) Which of the following is the non-conventional energy sources
- Bio gas
  - Coal
  - Petroleum
  - None of these
- j) Zoos are examples for
- In-situ conservation
  - in-vivo conservation
  - ex-situ conservation
  - ex-vivo conservation

**B] Very Short question (5x2=10)**

- Chipko andolan
- Artificial ecosystem
- Food web
- Alpha biodiversity
- National sanctuary

**PART B**

**Q2). Answer any four:**

**(4x5=20)**

- What is a biogeochemical cycle? Explain with neat sketch any one biogeochemical cycle.
- Discuss scope and importance of multidisciplinary nature of environmental studies.
- What is in-situ and ex situ-conservation? Write one examples for each.
- Give a brief account of renewable and nonrenewable energy resources with examples.
- Write a brief account on Biogas.
- Explain the followings.
  - Family welfare program.
  - Poverty and Environment.

**PART C**

**Answer any three:**

**(3x10=30)**

- What is an Ecosystem? Describe aquatic ecosystem in detail.
- What do you mean by sustainable development? Describe in detail two example of sustainable development.
- Give an account of the following with suitable examples:
  - Ecological pyramids
  - Energy flow in an ecosystem
- Define biodiversity. Explain the threats and causes of loss of biodiversity.
- Discuss about the growing energy need and use of alternate sources of energy.
- Define air pollution. Explain the causes, effects and control measures of air pollution.





# ARKA JAIN University, Jharkhand

3rd Semester Final Examination – 2018-19

Subject : Entrepreneurship & Small Business

Time : 3 Hours

Course:BA( JMC/FD)

Full Marks : 70

Pass Marks: 28

- Candidates are required to give their answers in their own words as far as practicable.
- Question Paper is divided into **Three Parts –A, B & C**
- **Part-A** is compulsory.
- **Part- B** contains **SIX** questions out of which **FOUR** questions are to be answered.
- **Part- C** contains **SIX** questions out of which **THREE** questions are to be answered.

## PART A

Q.1) All questions are compulsory

**A] Multiple Choice Questions :**

**(10x1=10)**

i) In MSME, “M” stands for :

- a) Medium
- c) Minor

- b) Multiple
- d) Micro

ii) The category of Entrepreneurs who create an entirely new products/services are:

- a) Innovating Entrepreneur
- c) Drone Entrepreneurs

- b) Imitative Entrepreneurs
- d) Fabian Entrepreneurs

iii) NIESBUD is located in

- a) Kolkata
- c) Hyderabad

- b) Ahmedabad
- d) NOIDA

iv) The apex institution which develops the curriculum for Entrepreneurship Development is:

- a) NSIC
- c) DIC

- b) SIDO
- d) NIESBUD

v) In DIC, “I” stands for :

- a) Information
- c) Informatics

- b) Industries
- d) Intelligence

vi) The category of Entrepreneurs who adopt changes with caution in their enterprise are:

- a) Innovating Entrepreneurs
- c) Drone Entrepreneurs

- b) Imitative Entrepreneurs
- d) Fabian Entrepreneurs

vii) Which of the following exclusively provides Entrepreneurship Development Programme:

- a) NSIC
- c) BIFR

- b) EDII
- d) DIC

viii) The “B” in the BIFR stands for

- a) BANK
- c) BOARD

- b) BUREAU
- d) BUSINESS

ix) Which among the following provides provisional registration under small scale industries:

- a) NSIC
- c) DIC

- b) SIDO
- d) NIESBUD